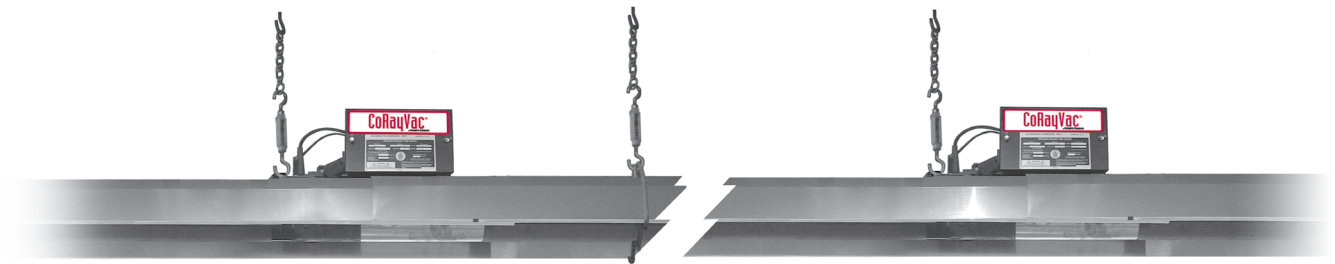


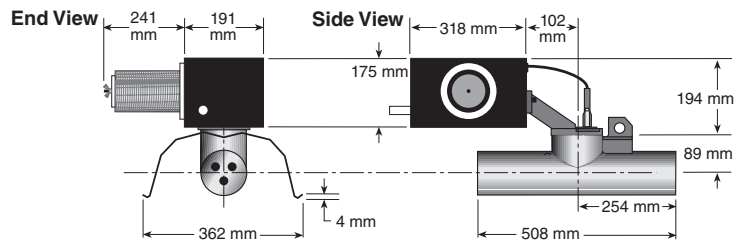
CoRayVac[®]

Over 91.0%^{NET}
Efficient!

Low-Intensity Continuous Radiant Heating System



- Fuel savings and enhanced user comfort provided by burners in-series design
- Greater efficiency from heat treated aluminised tube, uniquely profiled aluminium reflectors, and state of the art burner design
- Maximises useable space with low clearances to combustibles
- Reduced building penetrations as a result of multiple burners per pump
- Aesthetically pleasing by fitting flush with the ceiling and with optional decorative grilles
- Environmentally friendly - meets stringent emission standards
- Models CRT 20, 25 and 30 meet ECA efficiency requirements



Model		CRT10	CRT15	CORAYVAC® CRT20**	CRT25**	CRT30**
Burners in a Branch	max.	6	5	4	3	3
Radiant Tube Length Between Burners	[m] min.	3.0	5.2	6.0	7.2	8.6
	max.	6.0	9.0	12.0	15.0	18.0
Input	[kW]	10	15	20	25	30
Gas Consumption	[m ³ /h]*					
	NG [G20]	1.0	1.4	1.9	2.4	2.9
	NG [G25]	1.1	1.7	2.2	2.8	3.3
	LPG Butane [G30]	0.3	0.4	0.6	0.7	0.9
	LPG Propane [G31]	0.4	0.6	0.8	0.9	1.1
Fuel		NG (G20, G25); LPG Propane or LPG Butane (G30, G31)				
Inlet Pressure	[mbar] NG min.	(G20) - 11, (G25) - 15				
	LPG min.	Butane (G30) and Propane (G31) - 32				
	NG & LPG max.	50				
Gas Connection	[ISO 7-Rc]	½"				
Electrical Supply		Pumps - 230/400 V, 1 Ø or 3 Ø - Burner 230 V, 50/60 Hz, 1 Ø, 1 A				
Burner Head		Cast Iron (Optional - Nickel Plated Cast Iron)				
Combustion Chamber and Heat Exchanger Tubing		100 or 150 mm dia, 16 Gauge, Heat Treated Aluminised Steel Tubing				
Exhaust Flue	[mm]	100 or 150				
Reflector and End Caps		NS3H14 Aluminium (or 1.4016 2R Stainless Steel as Option)				
Ignition		Fully Automatic, Three-Try, Direct Spark, 100% Shut Off, Ignition Flame Rectification Module				
Approved As		Flued				
CE Standard		EN 777-4				
Accessories		Optional Lockout Indication (Volt Free Contacts)				
Weights						
Burner and Combustion Chamber	[kg]	9.5 kg/burner				
Tubing and Reflectors	[kg/m]	4.3 with Aluminium Reflectors, 5.85 with Stainless Steel Reflectors				

*Based on Gross Calorific Value



Authorised User No. 00184

** CRT 20, 25 and 30 models can be designed to be high efficiency heaters and are listed on the Enhanced Capital Allowance Scheme 'Energy Technology Product List'.

Clearances to Combustibles *** [mm]

Model	CRT10	CRT15	CRT20	CRT25	CRT30
Horizontal					
A	150	150	150	150	150
B	510	600	760	840	920
C	1500	1500	1500	1500	1530
D	510	600	760	840	920

***Clearances B, C and D can be reduced by 50% for locations 7 m or more downstream of the burner. For complete installation, operation and service criteria, please see the current issue of the Installation, Operation and Service Manual.

Installation Code and Annual Inspections:

All installations and service of ROBERTS GORDON® equipment must be performed by a contractor qualified in the installation and service of equipment sold and supplied by Roberts-Gordon and conform to all requirements set forth in the ROBERTS GORDON® manuals and all applicable governmental authorities pertaining to the installation, service and operation of the equipment. To help facilitate optimum performance and safety, Roberts-Gordon recommends that a qualified contractor annually inspect your ROBERTS GORDON® equipment and perform service where necessary, using only replacement parts sold and supplied by Roberts-Gordon.

Further Information: Applications, engineering and detailed guidance on systems design, installation and equipment performance is available through ROBERTS GORDON® representatives. Please contact us for any further information you may require, including the Installation, Operation and Service Manual.

This product is not for residential use.

This document is intended to assist licensed professionals in the exercise of their professional judgment.

Roberts Gordon Europe Limited

Unit A, Kings Hill Business Park
Darlaston Road, Wednesbury
West Midlands, WS10 7SH UK
Telephone: +44 (0)121 506 7700
Fax: +44 (0)121 506 7701
Service Telephone: +44 (0)121 506 7709
Service Fax: +44 (0)121 506 7702
E-mail: uksales@rg-inc.com
E-mail: export@rg-inc.com

www.rg-inc.com

Corporate Headquarters (USA)

Roberts-Gordon, LLC
Telephone: +1 716.852.4400
Fax: +1 716.852.0854